

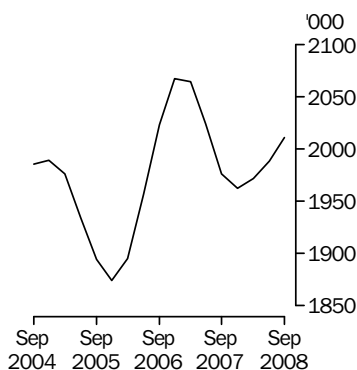
LIVESTOCK PRODUCTS

AUSTRALIA

EMBARGO: 11.30AM (CANBERRA TIME) FRI 14 NOV 2008

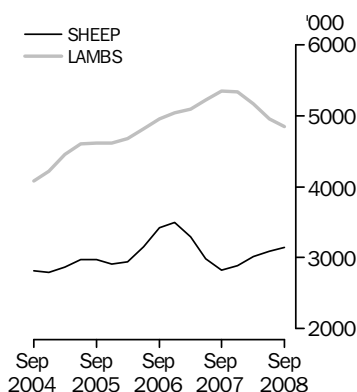
Cattle slaughtering

Excluding calves
Trend



Sheep and lamb slaughtering

Trend



KEY FIGURES

TREND ESTIMATES

	Sep Qtr 2007 '000	Jun Qtr 2008 '000	Sep Qtr 2008 '000
Number slaughtered			
Cattle (excl. calves)	1 976.5	1 988.5	2 010.8
Calves	221.8	204.2	206.5
Sheep	2 818.9	3 092.9	3 148.1
Lambs	5 346.5	4 958.9	4 847.6
Pigs	1 339.7	1 232.2	1 175.3
Chickens	114 806.0	116 131.6	116 862.2

	Sep Qtr 2007 tonnes	Jun Qtr 2008 tonnes	Sep Qtr 2008 tonnes
Meat produced			
Beef	527 538	534 776	540 430
Veal	7 282	6 441	6 497
Mutton	60 246	66 266	66 289
Lamb	111 570	101 301	97 540
Pig meat	97 143	88 639	83 812
Chicken meat	202 812	201 675	204 789
Wool receivals	106 183	99 047	96 698

	Jun Qtr 2007 ML	Mar Qtr 2008 ML	Jun Qtr 2008 ML
Whole milk intake by factories	2 299	2 305	2 336

KEY POINTS

TREND ESTIMATES

- In September quarter 2008, the trend estimate for the number of lambs slaughtered fell by 2% to 4.8 million.
- In September quarter 2008, the trend estimate for the number of pigs slaughtered fell by 5% to below 1.2 million.
- In September quarter 2008, the trend estimate for the number of sheep slaughtered increased by 2% to 3.1 million.

INQUIRIES

For further information about these and related statistics, contact the National Information and Referral Service on 1300 135 070.

NOTES

FORTHCOMING ISSUES

<i>ISSUE (Quarter)</i>	<i>RELEASE DATE</i>
December 2008	16 February 2009
March 2009	15 May 2009



CHANGES IN THIS ISSUE

There are no changes in this issue.



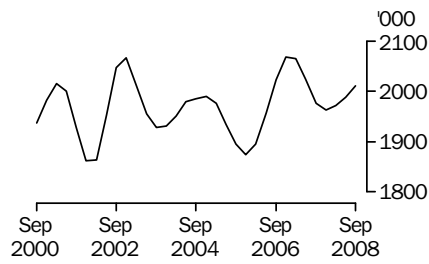
ABBREVIATIONS

ABS Australian Bureau of Statistics
ML megalitre
t tonne
UHT ultra heat treated

Peter Harper
Acting Australian Statistician

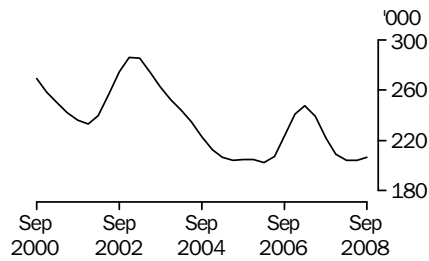
LIVESTOCK SLAUGHTERED TREND

CATTLE (EXCLUDING CALVES)



The trend estimate for the number of cattle (excluding calves) slaughtered increased by 1% to 2 million.

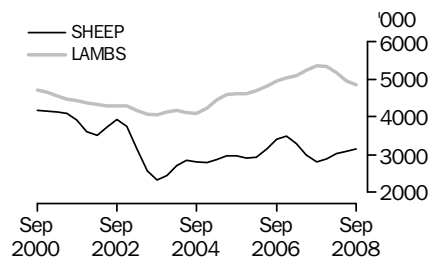
CALVES



The trend estimate for the number of calves slaughtered in the September quarter 2008 increased by 1% to 207 thousand.

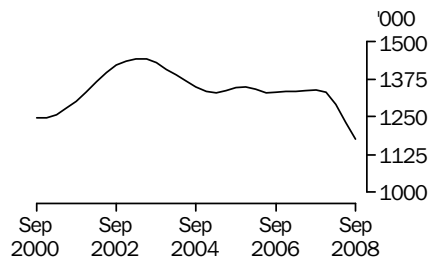
SHEEP AND LAMBS

GRAPH 3



In the September quarter 2008, the trend estimate for the number of sheep slaughtered increased by 2% to 3.1 million. The trend estimate for the number of lambs slaughtered decreased by 2% for the September quarter 2008 to 4.8 million.

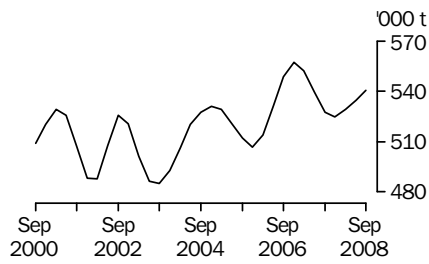
PIGS



The trend estimate for the number of pigs slaughtered in the September quarter 2008 fell by 5% to below 1.2 million.

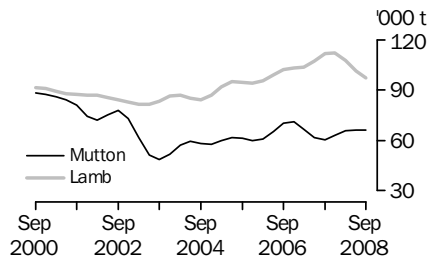
MEAT PRODUCTION TREND

BEEF



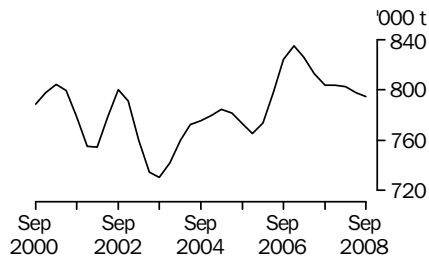
In the September quarter 2008, the trend estimate for beef production increased by 1% to 540 thousand tonnes.

MUTTON AND LAMB



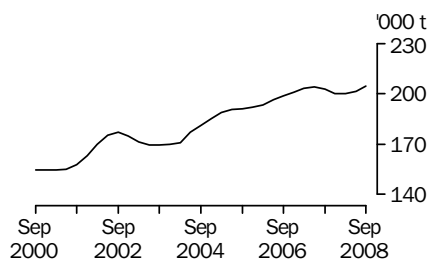
In the September quarter 2008 the trend estimate for mutton production remained steady at 66 thousand tonnes. The trend estimate for lamb production this quarter fell by 4% to 98 thousand tonnes.

TOTAL RED MEAT



The trend estimate for total red meat production fell marginally to 795 thousand tonnes in the September quarter 2008.

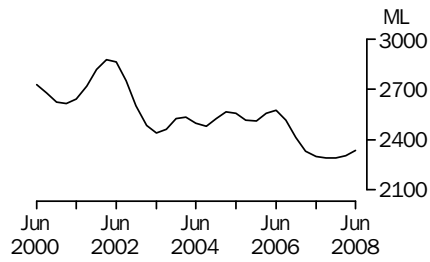
CHICKEN MEAT



The trend estimate for chicken meat production in the September quarter 2008 increased by 2% to 205 thousand tonnes.

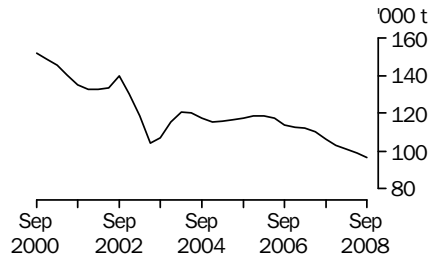
LIVESTOCK PRODUCTS TREND

WHOLE MILK INTAKE BY FACTORIES



The trend estimate for whole milk intake by factories in the June quarter 2008 increased by 1% to 2,336 million litres.

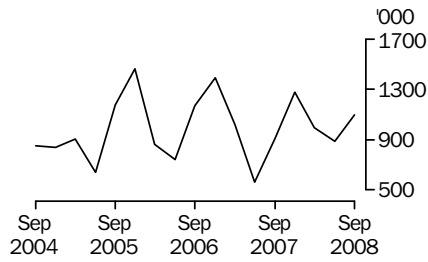
BROKERS AND DEALERS RECEIVALS OF TAXABLE WOOL



The trend estimate for wool receivals by brokers and dealers in the September quarter 2008 decreased by 2% to 97 thousand tonnes.

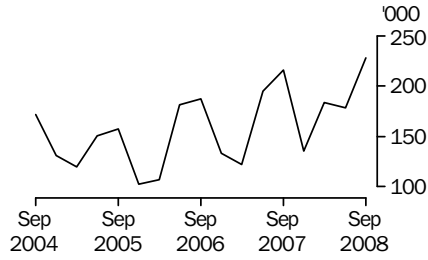
LIVESTOCK EXPORTS ORIGINAL

EXPORTS OF LIVE SHEEP



Live sheep exports increased by 24% to 1.1 million in the September quarter, 2008. Gross value rose by 33% for the quarter, up to \$87 million. Unit value increased by 8% to \$78.83.

EXPORTS OF LIVE CATTLE



Live cattle exports increased by 28% to 228 thousand in the September quarter, 2008. Gross value rose by 28% for the quarter, up to \$140 million. Unit value increased by 1% to \$614.33.

LIST OF TABLES AND GRAPHS

page

OVERVIEW

1	Number of livestock slaughtered, Australia	9
2	Livestock products, Australia	10

LIVESTOCK SLAUGHTERINGS

3	Number of livestock slaughtered, bulls, bullocks and steers, by state	11
4	Number of livestock slaughtered, cows and heifers, by state	12
5	Number of livestock slaughtered, total cattle (excluding calves), by state	13
6	Number of livestock slaughtered, calves, by state	14
7	Number of livestock slaughtered, sheep, by state	15
8	Number of livestock slaughtered, lambs, by state	16
9	Number of livestock slaughtered, pigs, by state	17
10	Number of chickens slaughtered, by state	18
11	Number of livestock slaughtered, financial year, by state	19

MEAT PRODUCED

12	Red meat produced, beef, by state	20
13	Red meat produced, veal, by state	21
14	Red meat produced, mutton, by state	22
15	Red meat produced, lamb, by state	23
16	Red meat produced, pig meat, by state	24
17	Total red meat produced, by state	25
18	Chicken meat produced, by state	26
19	Meat produced, financial year, by state	27

EXPORTS OF MEAT AND LIVE ANIMALS

20	Exports of fresh, chilled, frozen and processed meat, Australia	28
21	Exports of live sheep and cattle, Australia	29

LIVESTOCK PRODUCTS

22	Whole milk intake by factories, by state	30
23	Market milk sales by factories, by state	31
24	Brokers and dealers receivals of taxable wool, by state	32
25	Livestock products, financial year, by state	33

NUMBER OF LIVESTOCK SLAUGHTERED, Australia(a): All Series

Quarter	Bulls, bullocks and steers	Cows and heifers	Cattle (excluding calves)	Calves	Sheep	Lambs	Pigs	Chickens(b)
	'000	'000	'000	'000	'000	'000	'000	'000
ORIGINAL								
2007								
June	1 010.2	1 031.2	2 041.5	220.4	2 549.8	5 020.7	1 358.7	112 339.6
September	1 038.8	945.7	1 984.5	405.2	2 282.1	5 182.5	1 348.3	113 435.5
December	1 084.5	906.5	1 991.0	154.6	3 325.6	5 680.9	1 322.8	119 574.6
2008								
March	929.2	874.2	1 803.5	96.4	3 408.9	5 013.3	1 263.3	112 972.3
June	1 079.5	1 075.9	2 155.3	208.3	2 912.0	5 022.4	1 282.3	115 057.5
September	1 051.6	955.6	2 007.2	370.7	2 511.7	4 653.9	1 154.6	116 143.6
SEASONALLY ADJUSTED								
2007								
June	1 026.5	942.5	1 969.0	231.4	2 747.4	4 975.9	1 309.2	114 683.4
September	1 015.5	964.9	1 980.4	224.6	2 828.8	5 457.9	1 351.7	114 042.2
December	1 057.2	951.5	2 008.7	211.6	2 957.7	5 471.5	1 336.9	116 378.3
2008								
March	982.3	916.8	1 899.1	194.2	2 983.2	5 076.1	1 294.5	113 228.7
June	1 071.4	963.9	2 035.3	211.6	3 143.6	4 906.7	1 235.6	117 509.6
September	1 031.6	976.2	2 007.8	205.9	3 120.2	4 886.3	1 159.4	116 751.6
TREND								
2007								
June	1 053.3	970.9	2 024.2	239.0	2 979.8	5 221.9	1 337.2	114 551.8
September	1 024.3	952.2	1 976.5	221.8	2 818.9	5 346.5	1 339.7	114 806.0
December	1 020.4	941.9	1 962.3	209.4	2 890.0	5 336.4	1 330.7	114 827.0
2008								
March	1 029.2	942.8	1 972.1	204.6	3 020.6	5 169.0	1 291.3	115 353.0
June	1 035.8	952.7	1 988.5	204.2	3 092.9	4 958.9	1 232.2	116 131.6
September	1 040.7	970.1	2 010.8	206.5	3 148.1	4 847.6	1 175.3	116 862.2

(a) Australian total includes all states and both territories, unless otherwise noted. For more information refer to paragraphs 5, and 7 to 9 of the Explanatory Notes.

(b) Excludes Tasmania, Northern Territory and the Australian Capital Territory.

LIVESTOCK PRODUCTS, Australia(a): All Series

Quarter	RED MEAT						Chicken meat(b)	Whole milk intake by factories ML	Brokers and dealers receivals of taxable wool tonnes
	Beef tonnes	Veal tonnes	Mutton tonnes	Lamb tonnes	Pig meat tonnes	Total red meat tonnes			
ORIGINAL									
2007									
June	537 517	7 441	50 079	103 208	99 754	797 998	202 754	1 734	92 089
September	530 877	10 757	49 637	106 211	98 271	795 753	199 865	2 304	108 630
December	533 589	5 853	75 098	120 576	95 079	830 195	207 705	2 993	118 408
2008									
March	486 457	4 250	73 912	105 745	90 999	761 362	194 188	2 118	98 799
June	576 336	6 807	59 803	102 860	93 013	838 819	200 625	1 797	82 044
September	538 945	9 473	53 017	91 360	83 093	775 887	205 667	nya	100 421
SEASONALLY ADJUSTED									
2007									
June	525 955	7 512	56 272	100 637	94 896	785 272	203 411	2 300	113 527
September	528 757	7 424	61 061	114 083	97 605	808 930	201 700	2 341	102 587
December	535 312	7 009	64 383	117 103	97 387	821 194	203 470	2 252	103 576
2008									
March	511 046	6 010	65 259	104 042	94 122	780 479	195 741	2 280	101 026
June	549 123	6 717	67 363	100 812	88 509	812 524	201 534	2 387	100 104
September	537 564	6 531	65 273	97 902	82 686	789 956	207 639	nya	95 102
TREND									
2007									
June	539 656	7 747	61 529	107 237	96 280	812 449	204 031	2 299	110 093
September	527 538	7 282	60 246	111 570	97 143	803 779	202 812	2 289	106 183
December	524 850	6 818	63 042	112 150	96 752	803 612	200 170	2 289	102 898
2008									
March	529 390	6 530	65 661	107 589	93 519	802 689	199 857	2 305	100 930
June	534 776	6 441	66 266	101 301	88 639	797 423	201 675	2 336	99 047
September	540 430	6 497	66 289	97 540	83 812	794 568	204 789	nya	96 698

nya not yet available

(a) For more information refer to paragraphs 5 to 9 and 13 to 15 of the Explanatory Notes.

(b) Excludes Tasmania, Northern Territory and the Australian Capital Territory.

NUMBER OF LIVESTOCK SLAUGHTERED (a), Bulls, bullocks and steers: All Series

Quarter	New South Wales	Victoria	Queensland	South Australia	Western Australia	Tasmania	Australia (b)
	'000	'000	'000	'000	'000	'000	'000
ORIGINAL							
2007							
June	225.8	134.7	543.3	41.1	43.2	21.9	1 010.2
September	222.3	124.9	587.1	38.4	48.4	17.4	1 038.8
December	236.5	163.8	558.9	42.6	62.3	20.2	1 084.5
2008							
March	228.8	150.2	432.4	48.6	48.1	21.0	929.2
June	234.3	140.3	603.1	32.3	50.5	18.7	1 079.5
September	234.8	117.7	604.1	27.9	49.3	17.7	1 051.6
SEASONALLY ADJUSTED							
2007							
June	228.0	143.7	547.7	45.0	47.3	21.9	1 026.5
September	225.6	145.8	527.0	47.3	51.4	20.4	1 015.5
December	241.0	147.5	546.4	38.5	53.0	19.4	1 057.2
2008							
March	228.5	139.1	508.4	41.4	49.6	18.9	982.3
June	227.3	147.6	592.0	35.7	55.2	18.7	1 071.4
September	238.1	137.8	544.8	34.2	52.3	20.7	1 031.6
TREND							
2007							
June	232.7	150.2	559.7	45.1	48.1	21.3	1 053.3
September	231.5	144.8	533.6	44.3	50.4	20.3	1 024.3
December	231.3	144.1	529.2	42.1	51.8	19.6	1 020.4
2008							
March	231.9	144.0	542.2	39.1	52.4	19.0	1 029.2
June	231.7	142.4	554.3	36.5	52.8	19.3	1 035.8
September	232.4	140.6	561.2	35.0	53.2	19.9	1 040.7

(a) For more information refer to paragraphs 4, 5 and 7 of the Explanatory Notes.

(b) Includes all states and both territories.

NUMBER OF LIVESTOCK SLAUGHTERED(a), Cows and heifers: All Series

Quarter	New South Wales	Victoria	Queensland	South Australia	Western Australia	Tasmania	Australia(b)
	'000	'000	'000	'000	'000	'000	'000
ORIGINAL							
2007							
June	224.4	236.8	424.1	38.4	67.8	38.7	1 031.2
September	204.7	221.7	389.3	29.8	67.0	32.2	945.7
December	211.2	223.6	328.7	46.2	64.2	31.6	906.5
2008							
March	205.6	232.4	285.6	37.0	78.4	34.4	874.2
June	244.9	276.2	407.9	37.6	68.6	39.6	1 075.9
September	218.7	262.6	346.8	24.3	73.8	28.4	955.6
SEASONALLY ADJUSTED							
2007							
June	208.9	228.6	355.8	37.8	68.4	34.7	942.5
September	213.2	236.3	371.5	37.9	67.9	36.1	964.9
December	213.8	221.3	378.5	42.8	67.6	35.0	951.5
2008							
March	218.4	228.7	318.8	32.9	73.0	34.4	916.8
June	219.4	266.7	343.7	37.1	69.3	32.5	963.9
September	227.9	280.4	331.4	31.4	74.8	31.8	976.2
TREND							
2007							
June	212.3	239.7	375.6	40.0	67.8	34.2	970.9
September	211.6	227.8	368.0	39.0	68.3	35.4	952.2
December	214.5	225.7	357.6	38.5	69.0	35.4	941.9
2008							
March	217.6	238.4	344.9	37.0	70.4	34.1	942.8
June	221.4	258.0	333.8	34.6	71.9	32.9	952.7
September	225.7	278.0	328.5	32.6	73.2	31.9	970.1

(a) For more information refer to paragraphs 4, 5 and 7 of the Explanatory Notes.

(b) Includes all states and both territories.

NUMBER OF LIVESTOCK SLAUGHTERED (a), Total cattle (excluding calves): All Series

Quarter	New South Wales	Victoria	Queensland	South Australia	Western Australia	Tasmania	Australia (b)
	'000	'000	'000	'000	'000	'000	'000
ORIGINAL							
2007							
June	450.2	371.5	967.4	79.5	111.0	60.6	2 041.5
September	427.0	346.6	976.5	68.2	115.4	49.6	1 984.5
December	447.8	387.4	887.6	88.8	126.5	51.8	1 991.0
2008							
March	434.3	382.5	718.0	85.6	126.4	55.4	1 803.5
June	479.2	416.5	1 011.1	69.9	119.1	58.3	2 155.3
September	453.5	380.2	950.9	52.2	123.1	46.0	2 007.2
SEASONALLY ADJUSTED							
2007							
June	437.0	372.3	903.5	82.8	115.7	56.6	1 969.0
September	438.8	382.1	898.5	85.2	119.3	56.5	1 980.4
December	454.8	368.8	924.9	81.3	120.6	54.4	2 008.7
2008							
March	446.9	367.8	827.2	74.3	122.6	53.3	1 899.1
June	446.8	414.2	935.7	72.8	124.5	51.3	2 035.3
September	466.0	418.2	876.2	65.6	127.0	52.5	2 007.8
TREND							
2007							
June	445.0	389.9	935.2	85.1	115.8	55.5	2 024.2
September	443.1	372.6	901.5	83.3	118.7	55.7	1 976.5
December	445.7	369.8	886.8	80.6	120.8	54.9	1 962.3
2008							
March	449.4	382.4	887.1	76.0	122.7	53.1	1 972.1
June	453.2	400.4	888.1	71.1	124.7	52.2	1 988.5
September	458.1	418.6	889.7	67.6	126.3	51.8	2 010.8

(a) For more information refer to paragraphs 4, 5 and 7 of the Explanatory Notes.

(b) Includes all states and both territories.

NUMBER OF LIVESTOCK SLAUGHTERED (a), Calves: All Series

Quarter	New South Wales	Victoria	Queensland	South Australia	Western Australia	Tasmania	Australia (b)
	'000	'000	'000	'000	'000	'000	'000
ORIGINAL							
2007							
June	56.5	139.8	17.4	1.3	1.1	4.1	220.4
September	51.6	297.9	15.6	1.4	1.1	37.5	405.2
December	46.1	88.5	10.9	0.8	1.0	7.2	154.6
2008							
March	37.5	42.4	12.3	1.1	1.0	2.0	96.4
June	46.0	140.9	13.9	1.4	1.1	4.8	208.3
September	33.4	282.2	12.9	1.6	1.2	39.1	370.7
SEASONALLY ADJUSTED							
2007							
June	53.0	145.0	15.6	1.2	1.1	12.9	231.4
September	53.0	141.1	14.8	1.2	1.0	13.0	224.6
December	48.1	138.1	12.9	1.1	1.0	10.4	211.6
2008							
March	37.4	146.8	12.6	1.1	1.2	18.1	194.2
June	43.1	145.9	12.4	1.2	1.0	15.1	211.6
September	34.5	134.4	12.2	1.4	1.0	13.6	205.9
TREND							
2007							
June	56.6	152.9	15.5	1.3	1.0	12.6	239.0
September	51.2	142.0	14.6	1.1	1.0	12.5	221.8
December	46.4	140.6	13.3	1.1	1.0	13.5	209.4
2008							
March	42.3	143.5	12.6	1.1	1.1	14.9	204.6
June	38.8	142.7	12.3	1.2	1.1	15.3	204.2
September	36.3	139.8	12.2	1.4	1.0	14.9	206.5

(a) For more information refer to paragraphs 4, 5 and 7 of the Explanatory Notes.

(b) Includes all states and both territories.

NUMBER OF LIVESTOCK SLAUGHTERED (a), Sheep: All Series

Quarter	New South Wales	Victoria	Queensland	South Australia	Western Australia	Tasmania	Australia (b)
	'000	'000	'000	'000	'000	'000	'000
ORIGINAL							
2007							
June	701.0	658.4	276.2	296.0	550.5	67.7	2 549.8
September	546.4	694.1	187.3	287.0	524.9	42.4	2 282.1
December	895.6	1 038.7	203.6	328.0	765.9	93.9	3 325.6
2008							
March	807.5	1 028.1	189.4	370.4	892.0	121.6	3 408.9
June	738.6	783.5	202.9	332.7	772.3	82.0	2 912.0
September	697.0	831.1	113.6	325.0	508.5	36.4	2 511.7
SEASONALLY ADJUSTED							
2007							
June	705.1	745.2	256.1	349.3	636.7	72.9	2 747.4
September	704.7	847.4	213.8	332.4	628.0	75.5	2 828.8
December	817.7	919.3	203.2	278.3	677.6	84.6	2 957.7
2008							
March	708.0	877.4	181.4	334.1	765.6	91.9	2 983.2
June	747.9	893.2	187.6	391.2	885.6	83.2	3 143.6
September	899.3	1 012.2	130.8	376.0	610.7	65.8	3 120.2
TREND							
2007							
June	811.7	874.5	247.5	344.3	619.8	79.6	2 979.8
September	730.7	833.8	223.8	317.0	631.5	76.0	2 818.9
December	724.3	860.8	202.8	311.3	707.3	84.2	2 890.0
2008							
March	754.4	900.1	187.4	333.4	765.2	86.6	3 020.6
June	785.6	926.1	169.5	365.8	771.6	81.3	3 092.9
September	832.9	965.6	147.8	393.9	728.6	72.8	3 148.1

(a) For more information refer to paragraphs 4, 5 and 7 of the Explanatory Notes.

(b) Includes all states and both territories.

NUMBER OF LIVESTOCK SLAUGHTERED (a), Lambs: All Series

Quarter	New South Wales	Victoria	Queensland	South Australia	Western Australia	Tasmania	Australia (b)
	'000	'000	'000	'000	'000	'000	'000
ORIGINAL							
2007							
June	1 106.6	2 156.3	96.3	800.0	719.6	141.9	5 020.7
September	1 236.4	2 237.7	102.8	883.6	592.9	129.1	5 182.5
December	1 235.2	2 484.5	121.2	1 064.6	639.3	136.2	5 680.9
2008							
March	1 082.7	2 203.5	97.3	911.6	606.0	112.2	5 013.3
June	1 125.2	2 196.1	104.2	850.6	619.2	127.2	5 022.4
September	1 111.9	1 967.2	103.3	724.5	630.9	116.0	4 653.9
SEASONALLY ADJUSTED							
2007							
June	1 099.8	2 191.4	90.3	782.0	680.6	130.0	4 975.9
September	1 280.7	2 361.2	102.9	1 025.6	627.6	124.6	5 457.9
December	1 200.4	2 327.9	120.6	1 003.8	633.9	143.5	5 471.5
2008							
March	1 109.6	2 250.0	103.7	863.5	612.1	121.6	5 076.1
June	1 094.0	2 186.9	98.6	836.6	585.6	116.4	4 906.7
September	1 145.5	2 073.8	103.9	833.0	667.6	112.0	4 886.3
TREND							
2007							
June	1 150.2	2 311.4	98.1	874.8	670.7	126.2	5 221.9
September	1 203.4	2 310.7	105.9	952.0	656.4	131.9	5 346.5
December	1 195.2	2 309.5	109.7	965.9	619.3	132.5	5 336.4
2008							
March	1 143.9	2 261.3	107.8	910.1	610.6	126.1	5 169.0
June	1 110.7	2 173.7	102.8	844.8	617.7	118.0	4 958.9
September	1 115.2	2 102.6	99.5	814.8	632.7	111.2	4 847.6

(a) For more information refer to paragraphs 4, 5 and 7 of the Explanatory Notes.

(b) Includes all states and both territories.

NUMBER OF LIVESTOCK SLAUGHTERED (a), Pigs: All Series

Quarter	New South Wales	Victoria	Queensland	South Australia	Western Australia	Tasmania	Australia (b)
	'000	'000	'000	'000	'000	'000	'000
ORIGINAL							
2007							
June	407.8	208.4	327.2	255.6	147.6	11.7	1 358.7
September	410.1	182.1	336.6	270.2	139.0	10.3	1 348.3
December	406.6	172.9	311.6	286.0	135.2	10.4	1 322.8
2008							
March	378.3	145.4	306.3	288.6	135.0	9.7	1 263.3
June	310.2	183.2	332.5	300.9	145.5	10.0	1 282.3
September	247.3	191.3	304.4	266.3	136.5	8.8	1 154.6
SEASONALLY ADJUSTED							
2007							
June	398.5	198.1	319.7	246.3	140.3	11.5	1 309.2
September	415.6	181.4	330.5	274.2	139.6	10.4	1 351.7
December	401.2	173.9	319.2	288.9	140.8	9.8	1 336.9
2008							
March	385.9	153.4	312.1	294.7	136.1	10.4	1 294.5
June	303.9	173.8	324.8	287.8	138.2	9.8	1 235.6
September	251.8	190.5	298.5	270.3	137.4	9.0	1 159.4
TREND							
2007							
June	405.4	191.7	324.4	262.7	142.7	10.7	1 337.2
September	411.1	182.5	324.1	271.7	140.0	10.6	1 339.7
December	403.8	169.6	321.7	285.5	138.8	10.3	1 330.7
2008							
March	367.0	165.6	318.1	291.3	138.1	10.0	1 291.3
June	314.1	172.2	313.0	285.6	137.5	9.7	1 232.2
September	261.7	183.1	307.9	276.8	137.1	9.3	1 175.3

(a) For more information refer to paragraphs 4, 5 and 7 of the Explanatory Notes.

(b) Includes all states and both territories.

NUMBER OF CHICKENS SLAUGHTERED(a): All Series

Quarter	New South Wales	Victoria	Queensland	South Australia	Western Australia	Australia
	'000	'000	'000	'000	'000	'000
ORIGINAL						
2007						
June	37 010.4	31 159.4	22 428.6	np	np	112 339.6
September	36 320.3	30 704.8	23 697.8	np	np	113 435.5
December	38 283.6	32 886.6	25 128.2	np	np	119 574.6
2008						
March	36 537.6	29 543.0	24 144.5	np	np	112 972.3
June	36 455.3	30 445.6	25 045.1	np	np	115 057.5
September	37 382.4	31 716.0	23 564.9	np	np	116 143.6
SEASONALLY ADJUSTED						
2007						
June	37 434.0	31 485.0	23 676.9	np	np	114 683.4
September	36 411.8	31 039.7	23 765.9	np	np	114 042.2
December	37 811.7	32 190.1	23 704.6	np	np	116 378.3
2008						
March	36 483.3	29 567.1	24 268.4	np	np	113 228.7
June	36 840.4	30 754.3	26 424.1	np	np	117 509.6
September	37 550.9	32 052.5	23 620.4	np	np	116 751.6
TREND						
2007						
June	37 470.8	31 372.9	23 402.3	np	np	114 551.8
September	37 164.7	31 411.2	23 646.3	np	np	114 806.0
December	36 917.2	31 026.4	24 110.5	np	np	114 827.0
2008						
March	36 942.5	30 714.7	24 659.0	np	np	115 353.0
June	37 019.5	30 851.4	24 951.1	np	np	116 131.6
September	37 129.3	31 292.1	24 841.4	np	np	116 862.2

np not available for publication but included in totals where applicable, unless otherwise indicated

(a) Excludes Tasmania, Northern Territory and the Australian Capital Territory. For more information refer to paragraphs 8 and 9 of the Explanatory Notes.

NUMBER OF LIVESTOCK SLAUGHTERED (a): Original

Financial year	New South Wales '000	Victoria '000	Queensland '000	South Australia '000	Western Australia '000	Tasmania '000	Australia '000
BULLS, BULLOCKS AND STEERS							
2005-06	915.3	577.7	2 299.0	176.8	187.4	81.1	4 238.5
2006-07	941.3	634.5	2 357.2	179.4	189.0	88.5	4 390.9
2007-08	922.0	579.2	2 181.6	161.9	209.3	77.3	4 132.0
COWS AND HEIFERS							
2005-06	675.0	803.6	1 347.9	148.0	246.6	116.2	3 341.6
2006-07	808.7	932.7	1 474.1	162.5	259.7	129.1	3 770.8
2007-08	866.4	953.9	1 411.5	150.6	278.2	137.8	3 802.3
CATTLE (excluding calves)							
2005-06	1 590.3	1 381.3	3 646.9	324.8	434.0	197.3	7 580.1
2006-07	1 750.0	1 567.2	3 831.3	341.9	448.7	217.5	8 161.7
2007-08	1 788.4	1 533.0	3 593.1	312.5	487.4	215.1	7 934.3
CALVES							
2005-06	204.6	505.2	62.3	4.4	3.7	40.2	821.2
2006-07	232.1	574.7	61.9	4.9	3.7	40.8	918.9
2007-08	181.2	569.8	52.7	4.6	4.1	51.5	864.5
SHEEP							
2005-06	3 707.5	3 722.0	940.0	1 061.9	2 120.6	277.7	11 829.7
2006-07	3 888.6	3 978.0	1 000.2	1 414.0	2 613.8	376.5	13 271.2
2007-08	2 988.0	3 544.4	783.2	1 318.1	2 955.0	339.9	11 928.6
LAMBS							
2005-06	4 227.3	7 613.5	283.6	3 231.2	2 798.4	511.6	18 665.6
2006-07	4 457.5	9 099.9	327.0	3 251.5	2 523.2	499.3	20 158.3
2007-08	4 679.5	9 121.7	425.5	3 710.4	2 457.4	504.6	20 899.1
PIGS							
2005-06	1 633.1	777.8	1 292.9	1 018.9	599.2	41.8	5 370.1
2006-07	1 601.4	788.0	1 269.7	1 047.3	568.1	42.7	5 321.9
2007-08	1 505.3	683.6	1 287.0	1 145.7	554.8	40.4	5 216.8
CHICKENS (b)							
2005-06	149 432.5	122 320.1	82 723.2	np	np	na	437 864.5
2006-07	150 244.9	126 303.4	89 576.0	np	np	na	453 910.2
2007-08	147 596.8	123 579.8	98 015.5	np	np	na	461 039.9

na not available

np not available for publication but included in totals where applicable, unless otherwise indicated

(a) Australian total includes all states and both territories, unless otherwise noted. For more information refer to paragraphs 4, 5 and 7 to 9 of the Explanatory Notes.

(b) Australian total excludes Tasmania, Northern Territory and the Australian Capital Territory.

RED MEAT PRODUCED(a), Beef: All Series

<i>Quarter</i>	<i>New South Wales</i> tonnes	<i>Victoria</i> tonnes	<i>Queensland</i> tonnes	<i>South Australia</i> tonnes	<i>Western Australia</i> tonnes	<i>Tasmania</i> tonnes	<i>Australia</i> (b) tonnes
ORIGINAL							
2007							
June	112 983	85 567	274 034	21 145	27 565	15 964	537 517
September	107 427	83 312	280 138	17 671	28 998	13 077	530 877
December	113 527	95 382	255 334	22 767	32 413	13 912	533 589
2008							
March	111 849	94 439	211 758	22 536	30 846	14 773	486 457
June	118 360	102 727	293 022	17 976	29 154	14 842	576 336
September	114 012	92 752	275 307	13 661	31 105	11 853	538 945
SEASONALLY ADJUSTED							
2007							
June	112 418	86 873	259 684	22 200	29 373	15 026	525 955
September	111 897	92 069	256 295	22 285	30 031	15 179	528 757
December	113 523	90 497	265 299	20 638	30 303	14 152	535 312
2008							
March	112 516	91 663	237 408	19 531	30 147	13 565	511 046
June	113 135	101 812	278 018	18 940	30 984	13 927	549 123
September	118 790	102 535	252 765	17 208	32 081	13 735	537 564
TREND							
2007							
June	113 689	92 037	268 247	22 476	29 321	14 989	539 656
September	112 611	89 449	257 596	21 827	29 957	14 725	527 538
December	112 194	90 644	254 432	20 861	30 144	14 332	524 850
2008							
March	113 070	94 552	256 991	19 684	30 486	13 878	529 390
June	114 639	98 807	259 173	18 556	31 053	13 719	534 776
September	116 712	102 575	260 357	17 815	31 694	13 747	540 430

(a) For more information refer to paragraphs 4 to 7 of the Explanatory Notes.

(b) Includes all states and both territories.

	New South Wales	Victoria	Queensland	South Australia	Western Australia	Tasmania	Australia(b)
Quarter	tonnes	tonnes	tonnes	tonnes	tonnes	tonnes	tonnes
ORIGINAL							
2007							
June	3 697	2 858	672	41	72	89	7 441
September	3 393	5 938	579	41	76	718	10 757
December	3 047	2 092	453	30	67	152	5 853
2008							
March	2 454	1 146	488	35	65	49	4 250
June	3 023	3 035	521	42	69	105	6 807
September	2 142	5 919	509	48	78	765	9 473
SEASONALLY ADJUSTED							
2007							
June	3 453	2 966	609	38	71	254	7 512
September	3 521	2 928	563	37	64	256	7 424
December	3 166	3 039	513	36	70	218	7 009
2008							
March	2 446	3 506	493	36	77	331	6 010
June	2 820	3 157	474	39	67	295	6 717
September	2 230	2 935	495	43	66	272	6 531
TREND							
2007							
June	3 699	3 022	608	39	64	245	7 747
September	3 377	2 992	569	37	69	248	7 282
December	3 060	3 143	517	35	71	265	6 818
2008							
March	2 779	3 250	494	37	72	286	6 530
June	2 531	3 200	484	39	70	296	6 441
September	2 355	3 066	483	42	67	293	6 497

(a) For more information refer to paragraphs 4 to 7 of the Explanatory Notes.

(b) Includes all states and both territories.

RED MEAT PRODUCED(a), Mutton: All Series

Quarter	New South Wales	Victoria	Queensland	South Australia	Western Australia	Tasmania	Australia(b)
	tonnes	tonnes	tonnes	tonnes	tonnes	tonnes	tonnes
ORIGINAL							
2007							
June	13 863	12 070	5 187	6 685	10 999	1 275	50 079
September	12 301	14 576	3 848	7 207	10 880	825	49 637
December	20 726	23 081	4 570	8 324	16 512	1 886	75 098
2008							
March	18 476	21 478	4 107	8 771	18 702	2 378	73 912
June	16 011	15 024	4 119	7 489	15 598	1 562	59 803
September	15 017	16 541	2 409	7 539	10 810	701	53 017
SEASONALLY ADJUSTED							
2007							
June	14 739	14 565	5 076	8 147	12 966	1 391	56 272
September	15 612	17 860	4 354	8 125	12 939	1 498	61 061
December	17 717	19 212	4 292	6 986	14 330	1 607	64 383
2008							
March	16 678	18 525	3 982	7 982	16 193	1 744	65 259
June	17 217	18 352	4 027	9 100	18 248	1 708	67 363
September	18 999	20 215	2 746	8 479	12 906	1 291	65 273
TREND							
2007							
June	17 249	17 149	4 896	8 155	12 626	1 533	61 529
September	15 914	17 262	4 557	7 709	13 096	1 470	60 246
December	16 251	18 201	4 293	7 645	14 832	1 621	63 042
2008							
March	17 182	18 832	4 037	8 007	16 052	1 683	65 661
June	17 673	19 009	3 652	8 508	16 136	1 604	66 266
September	18 261	19 449	3 149	8 889	15 200	1 461	66 289

(a) For more information refer to paragraphs 4 to 7 of the Explanatory Notes.

(b) Includes all states and both territories.

Quarter	<i>New South Wales</i>	<i>Victoria</i>	<i>Queensland</i>	<i>South Australia</i>	<i>Western Australia</i>	<i>Tasmania</i>	Australia (b)
	tonnes	tonnes	tonnes	tonnes	tonnes	tonnes	tonnes
ORIGINAL							
2007							
June	21 864	43 981	1 710	18 228	14 497	2 928	103 208
September	24 900	46 042	2 021	19 059	11 564	2 625	106 211
December	25 057	53 059	2 601	24 257	12 753	2 848	120 576
2008							
March	22 041	46 732	2 060	20 384	12 222	2 306	105 745
June	22 388	44 448	2 023	19 018	12 338	2 644	102 860
September	21 275	38 458	1 996	14 675	12 546	2 411	91 360
SEASONALLY ADJUSTED							
2007							
June	21 365	44 829	1 623	17 500	13 545	2 665	100 637
September	26 078	48 767	2 047	22 502	12 336	2 498	114 083
December	24 514	49 590	2 527	23 536	12 751	3 025	117 103
2008							
March	22 102	47 788	2 187	18 829	12 304	2 540	104 042
June	21 871	44 097	1 949	18 379	11 535	2 409	100 812
September	22 152	40 743	2 033	17 140	13 385	2 289	97 902
TREND							
2007							
June	22 926	47 432	1 832	19 385	13 336	2 567	107 237
September	24 220	48 267	2 100	21 420	13 069	2 702	111 570
December	24 224	48 758	2 271	21 875	12 348	2 749	112 150
2008							
March	23 027	47 349	2 232	20 325	12 200	2 631	107 589
June	21 981	44 350	2 075	18 286	12 324	2 448	101 301
September	21 725	41 579	1 935	16 966	12 600	2 280	97 540

(a) For more information refer to paragraphs 4 to 7 of the Explanatory Notes.

(b) Includes all states and both territories.

RED MEAT PRODUCED(a), Pig meat: All Series

Quarter	New South Wales	Victoria	Queensland	South Australia	Western Australia	Tasmania	Australia (b)
	tonnes	tonnes	tonnes	tonnes	tonnes	tonnes	tonnes
ORIGINAL							
2007							
June	28 897	15 481	24 818	19 610	10 239	690	99 754
September	28 902	13 387	24 903	20 900	9 570	609	98 271
December	28 614	12 909	22 329	21 448	9 181	597	95 079
2008							
March	26 604	11 238	22 725	20 662	9 213	557	90 999
June	22 120	13 623	24 795	22 056	9 836	582	93 013
September	17 068	14 399	22 629	19 295	9 196	506	83 093
SEASONALLY ADJUSTED							
2007							
June	27 568	14 654	23 662	18 594	9 704	680	94 896
September	29 023	13 042	24 206	20 990	9 583	606	97 605
December	28 824	13 131	23 363	21 938	9 648	564	97 387
2008							
March	27 521	12 072	23 494	21 260	9 260	605	94 122
June	21 131	12 868	23 649	20 916	9 313	571	88 509
September	17 233	14 007	21 984	19 390	9 237	505	82 686
TREND							
2007							
June	27 924	14 077	23 938	19 817	9 847	628	96 280
September	28 913	13 476	23 850	20 604	9 632	617	97 143
December	28 752	12 754	23 719	21 458	9 500	598	96 752
2008							
March	26 066	12 590	23 502	21 416	9 390	578	93 519
June	22 016	12 965	23 085	20 647	9 285	560	88 639
September	17 927	13 509	22 623	19 794	9 201	535	83 812

(a) For more information refer to paragraphs 4 to 7 of the Explanatory Notes.

(b) Includes all states and both territories.

TOTAL RED MEAT PRODUCED(a): All Series

Quarter	New South Wales	Victoria	Queensland	South Australia	Western Australia	Tasmania	Australia(b)
	tonnes	tonnes	tonnes	tonnes	tonnes	tonnes	tonnes
ORIGINAL							
2007							
June	181 305	159 956	306 421	65 709	63 372	20 946	797 998
September	176 923	163 255	311 488	64 877	61 088	17 854	795 753
December	190 970	186 523	285 288	76 825	70 926	19 394	830 195
2008							
March	181 424	175 032	241 138	72 387	71 049	20 063	761 362
June	181 902	178 858	324 480	66 582	66 994	19 734	838 819
September	169 513	168 068	302 850	55 218	63 735	16 235	775 887
SEASONALLY ADJUSTED							
2007							
June	179 543	163 887	290 654	66 479	65 659	20 016	785 272
September	186 131	174 666	287 465	73 939	64 953	20 037	808 930
December	187 744	175 469	295 994	73 134	67 102	19 566	821 194
2008							
March	181 263	173 554	267 564	67 638	67 981	18 785	780 479
June	176 174	180 286	308 117	67 374	70 147	18 910	812 524
September	179 404	180 435	280 023	62 260	67 675	18 092	789 956
TREND							
2007							
June	185 487	173 717	299 521	69 872	65 194	19 962	812 449
September	185 035	171 446	288 672	71 597	65 823	19 762	803 779
December	184 481	173 500	285 232	71 874	66 895	19 565	803 612
2008							
March	182 124	176 573	287 256	69 469	68 200	19 056	802 689
June	178 840	178 331	288 469	66 036	68 868	18 627	797 423
September	176 980	180 178	288 547	63 506	68 762	18 316	794 568

(a) For more information refer to paragraphs 4 to 7 of the Explanatory Notes.

(b) Includes all states and both territories.

CHICKEN MEAT PRODUCED(a): All Series

Quarter	New South Wales	Victoria	Queensland	South Australia	Western Australia	Australia
	tonnes	tonnes	tonnes	tonnes	tonnes	tonnes
ORIGINAL						
2007						
June	73 524	59 120	34 970	np	np	202 754
September	68 748	57 002	37 640	np	np	199 865
December	69 506	61 849	39 238	np	np	207 705
2008						
March	65 205	54 459	38 143	np	np	194 188
June	63 874	58 091	41 454	np	np	200 625
September	67 693	60 271	38 902	np	np	205 667
SEASONALLY ADJUSTED						
2007						
June	72 853	58 997	36 219	np	np	203 411
September	69 790	58 305	37 218	np	np	201 700
December	69 442	59 447	37 812	np	np	203 470
2008						
March	64 780	55 622	38 716	np	np	195 741
June	63 369	57 953	42 788	np	np	201 534
September	68 824	61 563	38 585	np	np	207 639
TREND						
2007						
June	73 286	58 414	36 628	np	np	204 031
September	70 802	58 788	37 036	np	np	202 812
December	67 687	57 830	38 123	np	np	200 170
2008						
March	65 836	57 517	39 544	np	np	199 857
June	65 407	58 369	40 352	np	np	201 675
September	66 116	59 899	40 486	np	np	204 789

np not available for publication but included in totals where applicable, unless otherwise indicated

(a) Excludes Tasmania, Northern Territory and the Australian Capital Territory. For more information refer to paragraphs 8 and 9 of the Explanatory Notes.

MEAT PRODUCED(a): Original

<i>Financial year</i>	<i>New South Wales</i> tonnes	<i>Victoria</i> tonnes	<i>Queensland</i> tonnes	<i>South Australia</i> tonnes	<i>Western Australia</i> tonnes	<i>Tasmania</i> tonnes	<i>Australia</i> tonnes
BEEF							
2005-06	411 202	331 311	1 054 198	83 547	113 318	54 807	2 049 521
2006-07	453 065	370 471	1 106 975	90 136	114 434	59 580	2 195 713
2007-08	451 163	375 860	1 040 252	80 949	121 412	56 603	2 127 259
VEAL							
2005-06	13 288	10 011	2 994	149	250	809	27 551
2006-07	15 110	11 655	2 543	157	249	815	30 579
2007-08	11 917	12 211	2 041	148	277	1 024	27 667
MUTTON							
2005-06	78 795	70 562	19 102	24 098	45 939	5 294	243 791
2006-07	82 552	74 875	19 854	32 962	53 553	7 192	270 988
2007-08	67 514	74 159	16 643	31 791	61 692	6 650	258 450
LAMB							
2005-06	84 763	153 449	5 457	69 636	58 080	10 452	381 837
2006-07	88 855	184 913	6 048	71 871	50 610	10 286	412 583
2007-08	94 386	190 281	8 706	82 718	48 877	10 423	435 391
PIG MEAT							
2005-06	115 908	57 015	95 628	76 663	40 977	2 374	388 863
2006-07	109 637	58 316	94 276	78 008	38 901	2 487	381 865
2007-08	106 239	51 158	94 751	85 066	37 799	2 345	377 362
TOTAL RED MEAT							
2005-06	703 956	622 349	1 177 380	254 093	258 563	73 735	3 091 562
2006-07	749 219	700 230	1 229 696	273 136	257 746	80 360	3 291 728
2007-08	731 219	703 668	1 162 392	280 671	270 057	77 046	3 226 129
CHICKEN MEAT (b)							
2005-06	285 294	215 448	135 650	np	np	na	772 613
2006-07	291 907	236 020	139 601	np	np	na	811 591
2007-08	267 333	231 401	156 475	np	np	na	802 384

na not available

np not available for publication but included in totals where applicable, unless otherwise indicated

(a) For more information refer to paragraphs 4 to 9 in the Explanatory Notes.

(b) Excludes Tasmania, Northern Territory and the Australian Capital Territory.

Period	FRESH, CHILLED OR FROZEN MEAT									PROCESSED MEAT	
	Beef bone-in tonnes	Beef bone-out tonnes	Veal bone-in tonnes	Veal bone-out tonnes	Mutton bone-in tonnes	Mutton bone-out tonnes	Lamb bone-in tonnes	Lamb bone-out tonnes	Pork tonnes	Bacon and ham tonnes	Canned meat tonnes
2005-06	52 196	890 604	3 266	5 793	106 948	41 458	119 523	26 491	44 007	292	20 857
2006-07	52 389	971 531	3 753	5 792	124 851	42 826	127 491	29 042	41 313	550	16 051
2007-08	57 199	917 494	3 704	5 049	119 500	43 827	134 100	32 499	39 138	772	12 493
2007											
June	11 636	238 056	989	1 363	22 112	8 503	30 767	8 045	10 272	145	2 621
September	12 745	230 120	1 037	1 956	19 988	7 859	31 534	8 043	10 912	98	2 766
December	15 341	248 642	965	1 533	37 221	12 511	40 516	8 697	9 710	209	2 895
2008											
March	11 194	183 511	772	572	34 010	11 475	31 496	7 469	8 949	225	3 400
June	17 919	255 221	930	988	28 280	11 982	30 555	8 291	9 568	239	3 432
September	13 269	240 269	1 524	1 840	20 711	8 482	25 846	5 076	8 978	266	3 300

(a) For more information refer to paragraphs 10 and 11 of the Explanatory Notes.

<i>Period</i>	<i>Number</i>	<i>Gross weight</i>	<i>Gross value</i>	<i>Unit value</i>
	'000	'000 tonnes	\$'000	\$
.....				
SHEEP				
2005-06	4 247.7	209.5	291 452	68.61
2006-07	4 137.9	198.8	288 697	69.77
2007-08	4 069.0	197.0	286 442	70.40
2007				
June	561.4	28.7	37 815	67.36
September	910.1	43.5	63 022	69.25
December	1 279.1	62.3	91 101	71.22
2008				
March	992.8	48.2	67 334	67.82
June	886.9	42.9	64 985	73.27
September	1 098.1	52.7	86 570	78.83
.....				
CATTLE				
2005-06	548.8	182.7	357 793	651.99
2006-07	638.0	216.1	437 427	685.58
2007-08	713.3	241.2	450 511	631.63
2007				
June	194.9	69.1	129 024	662.01
September	216.0	74.2	137 654	637.25
December	135.6	45.8	88 620	653.75
2008				
March	183.5	59.2	115 127	627.51
June	178.2	61.9	109 111	612.23
September	228.1	75.1	140 100	614.33

(a) For more information refer to paragraph 12 of the Explanatory Notes.

WHOLE MILK INTAKE, By Factories(a)(b): All Series

	<i>New South Wales</i>	<i>Victoria</i>	<i>Queensland</i>	<i>South Australia</i>	<i>Western Australia</i>	<i>Tasmania</i>	Australia
<i>Quarter</i>	ML	ML	ML	ML	ML	ML	ML
ORIGINAL							
2007							
March	255	1 363	124	159	77	167	2 144
June	247	1 045	113	145	81	103	1 734
September	275	1 555	125	145	86	119	2 304
December	294	2 046	134	180	89	251	2 993
2008							
March	244	1 374	116	143	69	172	2 118
June	236	1 117	110	138	76	120	1 797
SEASONALLY ADJUSTED							
2007							
March	270	1 488	131	168	86	155	2 298
June	273	1 506	124	156	85	156	2 300
September	269	1 547	118	155	82	170	2 341
December	261	1 476	124	151	80	160	2 252
2008							
March	259	1 510	122	149	78	162	2 280
June	260	1 597	121	151	79	179	2 387
TREND							
2007							
March	272	1 522	130	163	87	158	2 332
June	270	1 503	124	159	84	159	2 299
September	267	1 504	121	154	82	161	2 289
December	263	1 510	121	151	80	164	2 289
2008							
March	260	1 527	122	150	79	167	2 305
June	258	1 557	122	150	78	171	2 336

(a) For more information refer to paragraph 13 of the Explanatory Notes.

(b) Data for Australian Capital Territory are included in New South Wales; data for Northern Territory are included in South Australia.

Source: Original series data from Dairy Australia.

MARKET MILK SALES, By Factories(a)(b): All Series

	<i>New South Wales</i>	<i>Victoria</i>	<i>Queensland</i>	<i>South Australia</i>	<i>Western Australia</i>	<i>Tasmania</i>	<i>Australia</i>
<i>Quarter</i>	ML	ML	ML	ML	ML	ML	ML
ORIGINAL							
2007							
March	167	126	118	51	57	14	532
June	175	129	121	53	59	14	550
September	174	129	128	53	59	14	557
December	168	127	125	52	59	14	545
2008							
March	167	129	124	50	59	14	542
June	173	135	127	52	60	14	561
SEASONALLY ADJUSTED							
2007							
March	170	127	120	52	58	14	540
June	173	128	122	53	59	14	549
September	170	127	124	52	58	14	545
December	170	129	125	52	59	14	549
2008							
March	170	132	126	52	60	14	554
June	171	132	128	51	60	14	556
TREND							
2007							
March	171	127	120	52	57	14	542
June	172	127	122	52	58	14	545
September	171	128	124	52	59	14	548
December	171	129	125	52	59	14	550
2008							
March	170	131	126	52	60	14	553
June	171	132	127	52	60	14	556

(a) For more information refer to paragraph 13 of the Explanatory Notes.

(b) Data for Australian Capital Territory are included in New South Wales; data for Northern Territory are included in South Australia.

Source: Original series data from Dairy Australia.

BROKERS AND DEALERS RECEIVALS OF TAXABLE WOOL(a): All Series

Quarter	New South Wales	Victoria	Queensland	South Australia	Western Australia	Tasmania	Australia	% of total received by brokers
	tonnes	tonnes	tonnes	tonnes	tonnes	tonnes	tonnes	%
ORIGINAL								
2007								
June	28 002	23 457	4 575	15 490	18 158	2 407	92 089	77.2
September	37 528	25 975	3 744	17 841	20 646	2 896	108 630	83.6
December	34 652	33 724	2 977	19 328	25 562	2 165	118 408	79.7
2008								
March	29 895	24 831	2 193	14 869	25 320	1 691	98 799	81.1
June	29 094	21 438	3 370	11 927	13 771	2 443	82 044	79.3
September	35 673	22 069	3 395	16 466	20 177	2 642	100 421	83.9
SEASONALLY ADJUSTED								
2007								
June	32 001	29 038	4 048	19 689	26 140	2 611	113 527	..
September	32 554	27 366	2 817	16 597	20 680	2 574	102 587	..
December	31 842	26 898	3 603	16 310	23 088	1 835	103 576	..
2008								
March	33 866	24 996	3 066	15 718	21 026	2 352	101 026	..
June	33 122	26 561	2 951	14 891	19 947	2 632	100 104	..
September	30 967	23 428	2 575	15 538	20 247	2 346	95 102	..
TREND								
2007								
June	31 575	29 299	3 631	18 870	24 155	2 564	110 093	..
September	32 144	27 677	3 436	17 630	22 956	2 340	106 183	..
December	32 876	26 534	3 246	16 179	21 844	2 219	102 898	..
2008								
March	33 009	25 908	3 120	15 537	21 075	2 281	100 930	..
June	32 675	25 192	2 926	15 321	20 513	2 422	99 047	..
September	32 014	24 440	2 660	15 224	19 853	2 507	96 698	..

.. not applicable

(a) For more information refer to paragraphs 4, 14 and 15 of the Explanatory Notes.

<i>Financial year</i>	<i>New South Wales</i>	<i>Victoria</i>	<i>Queensland</i>	<i>South Australia</i>	<i>Western Australia</i>	<i>Tasmania</i>	<i>Australia</i>
.....							
WHOLE MILK INTAKE BY FACTORIES (b) (ML)							
2005-06	1 217	6 583	609	680	377	622	10 089
2006-07	1 105	6 297	534	655	349	642	9 582
2007-08	1 049	6 092	486	606	319	661	9 213
.....							
MARKET MILK SALES BY FACTORIES (b) (ML)							
2005-06	656	495	445	198	219	53	2 066
2006-07	683	509	477	207	229	55	2 160
2007-08	682	520	502	207	237	55	2 204
.....							
BROKERS AND DEALERS RECEIVALS OF TAXABLE WOOL (Tonnes)							
2005-06	141 422	119 382	18 558	62 004	118 801	12 360	472 527
2006-07	124 884	121 439	15 927	72 269	104 492	11 518	450 529
2007-08	131 170	105 968	12 283	63 966	85 299	9 195	407 881

(a) For more information refer to paragraphs 13 to 15 of the Explanatory Notes.

(b) Data for Australian Capital Territory are included in New South Wales; data for Northern Territory are included in South Australia.

Source: Original series milk data from Dairy Australia.

EXPLANATORY NOTES

INTRODUCTION

1 This publication contains information on livestock slaughterings, meat production, exports of live sheep and live cattle, exports of fresh, chilled, frozen and processed meat, and whole milk intake by factories, market milk sales by factories and receivals of taxable wool by wool brokers and dealers.

2 The figures shown in this publication have been revised where necessary and as a consequence may not agree with similar data shown in previous publications.

3 Where figures have been rounded, discrepancies may occur between sums of the component items and totals.

4 Unless indicated otherwise, Australian totals include data for all states and both territories. Where states and territories do not appear in tables, this is for reasons of confidentiality.

LIVESTOCK SLAUGHTERINGS AND MEAT PRODUCTION

5 The statistics on slaughterings for red meat production are based on a monthly collection from abattoirs and other major slaughtering establishments and include estimates of animals slaughtered on farms and by country butchers and other small slaughtering establishments.

6 Red meat is shown in carcass weight and excludes offal.

7 Care should be taken when using this information as the figures only relate to slaughterings for human consumption and do not include animals condemned, slaughtered for pet food or those killed for boiling down.

8 Poultry slaughterings and meat produced statistics have been compiled from quarterly returns supplied by commercial poultry slaughtering establishments and comprise boilers, fryers and roasters. Many small producers are excluded from the collection; however, the statistics represent a high level of coverage. Tasmanian, Northern Territory and Australian Capital Territory data are excluded from the Australian total.

9 Chicken meat is shown in dressed weight of whole birds, pieces and giblets. Some slaughterings and meat production statistics for 'Ducks and Drakes' and 'Other Fowls and Turkeys' are available on request. Inquiries should be made to the National Information and Referral Service on 1300 135 070.

EXPORTS OF FRESH, CHILLED, FROZEN AND PROCESSED MEAT

10 Table 20 shows exports of fresh, chilled, frozen and processed meat. International trade statistics are compiled by the ABS from information submitted by exporters and importers or their agents to the Australian Customs Service. Factors can be applied to beef, veal, mutton and lamb bone-out figures to derive bone-in carcass weight which, when added to bone-in figures, shows total exports in carcass weight. The factor for beef and veal is 1.5 and for mutton and lamb, 2.0. This information is sourced from Department of Agriculture, Fisheries and Forestry – Australia.

11 Beef also includes buffalo meat. Bacon and ham shown is the cured carcass weight of smoked or cooked bacon and ham. It also includes the stated net weight of packs of canned bacon and ham. Canned meat is shown as the canned weight and excludes canned bacon and ham.

LIVE SHEEP AND CATTLE EXPORTS

12 Table 21 contains statistics of the number of live sheep and cattle exported, the gross weight, gross value and unit value. The unit value is obtained by dividing the gross value by the number of animals exported. Sheep and cattle exported for breeding are excluded.

EXPLANATORY NOTES *continued*

MILK

13 Tables 2, 22, 23 and 25 contain statistics collected by Dairy Australia. Data on the latest quarter are not yet available. Whole milk intake by factories includes the whole milk equivalent of farm cream intake. Market milk sales includes white, flavoured, high and low fat milk and UHT milk. Interstate transfers of UHT milk have been included in their state of destination.

WOOL RECEIVALS

14 The statistics in tables 2, 24 and 25 show the amount of taxable wool received by brokers and purchased by dealers from wool producers. It excludes wool received by brokers on which tax has already been paid by other dealers (private buyers) or brokers.

15 The information shown is on the basis of the state in which wool has actually been received and does not necessarily reflect the production of wool in that state.

SEASONAL ADJUSTMENT

16 Seasonal adjustment is a means of removing the estimated effects of normal seasonal variation from the series so that the effects of other influences can be more clearly recognised.

17 In the seasonal adjustment of the livestock estimates, account has been taken of both normal seasonal factors and 'trading day' effects, where significant, (arising from the varying length of each quarter and the varying numbers of Sundays, Mondays, Tuesdays etc. in the quarter). Adjustments are also made for the effects of change in the date of Easter holidays, again, where significant. Seasonal adjustment does not remove from the series the effect of irregular influences (e.g. abnormal weather, industrial disputes).

18 The state component series have been seasonally adjusted independently. Therefore, the adjusted components may not add to the Australian group totals.

19 In this publication, the seasonally adjusted estimates are produced by the concurrent seasonal adjustment method which takes account of the latest available original estimates. This method improves the estimation of seasonal factors and therefore, the seasonally adjusted and trend estimates for the current and previous quarters. As a result of this improvement, revisions to the seasonally adjusted and trend estimates will be observed for recent periods. In most instances the only noticeable revisions will be to the previous quarter and the same quarter one year ago. A more detailed review is conducted annually prior to the September quarter release, using data up to and including the June quarter. The concurrent seasonal adjustment methodology replaces the forward factor methodology used previously.

20 More recently, the ABS has implemented improved methods of producing seasonally adjusted estimates, focused on the application of Autoregressive Integrated Moving Average (ARIMA) modelling techniques. ARIMA modelling is a technique that can be used to extend original estimates beyond the end of a time series. For more information on the details of ARIMA modelling, see the feature article '*Use of ARIMA modelling to reduce revisions*' in the October 2004 issue of *Australian Economic Indicators* (cat. no. 1350.0).

TREND ESTIMATES

21 A trend estimate is obtained by reducing the irregular component from the seasonally adjusted series. In this publication trend estimates are generally derived by applying a 7-term Henderson moving average to the seasonally adjusted series. The 7-term Henderson (like all Henderson averages) is symmetric, but as the end of a time series is approached, asymmetric forms of the average are applied. Unlike the weights of the standard 7-term Henderson moving average, the weights employed here have been tailored to suit the particular characteristics of individual series. While the asymmetric weights enable the trend to be calculated for recent quarters, it does result in revisions to the estimates for the most recent three quarters as additional observations become available. Revisions of trend estimates will also occur with revisions to the original data and re-estimation of seasonal factors.

EXPLANATORY NOTES *continued*

TREND ESTIMATES *continued*

22 Sensitivity analysis indicates the potential magnitude and direction of revisions created to the last three estimates. It aims to show how a specified movement in the seasonally adjusted data in the next period will affect the trend path of the time series. By showing how sensitive the trend estimates are to the addition of new data, the analysis provides information which can be used in the assessment of the trend's stability.

23 The state component series have been adjusted independently. Therefore, the adjusted components may not add to the Australian group totals.

24 For further information, see *Information Paper: A Guide to Interpreting Time Series – Monitoring 'Trends', an Overview* (cat. no. 1348.0) or contact the Assistant Director, Time Series Analysis on Canberra (02) 6252 6345.

RELATED PUBLICATIONS

25 Current publications and other products released by the ABS are listed in the *Catalogue of Publications and Products* (cat. no. 1101.0). The Catalogue is available from any ABS office or the ABS web site <<http://www.abs.gov.au>>. The ABS also issues a daily Release Advice on the web site which details products to be released in the week ahead.

GENERAL ACKNOWLEDGMENT

26 ABS publications draw extensively on information provided freely by individuals, businesses, governments and other organisations. Their continued cooperation is very much appreciated. Without it, the wide range of statistics published by the ABS would not be available. Information received by the ABS is treated in strict confidence as required by the *Census and Statistics Act 1905*.

APPENDIX WHAT IF ... ? REVISIONS TO TREND ESTIMATES

TREND REVISIONS

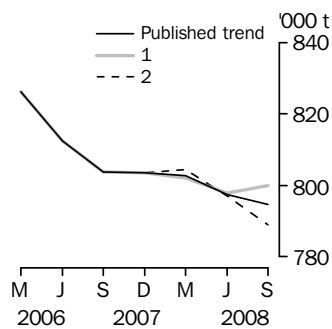
Recent seasonally adjusted and trend estimates are likely to be revised when original estimates for subsequent quarters become available. The approximate effects of possible scenarios on trend estimates are presented in the 'What-if' graphs below. These illustrate the impact on trend estimates if next quarter's seasonally adjusted estimate either rises (1) or falls (2) by a certain percentage, based on the historical average of movements in seasonally adjusted estimates.

For further information, see paragraphs 21 to 23 of the Explanatory Notes.

Red meat production

1. The next quarter's seasonally adjusted estimate of red meat production is 2.5% higher than the September quarter 2008 estimate.
2. The next quarter's seasonally adjusted estimate of red meat production is 2.5% lower than the September quarter 2008 estimate.

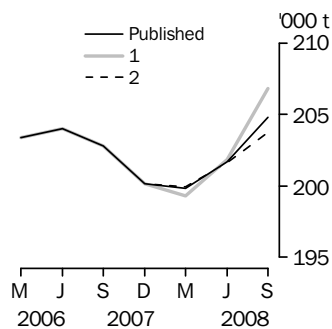
WHAT-IF RED MEAT PRODUCTION



Chicken meat production

1. The next quarter's seasonally adjusted estimate of chicken meat production is 2.6% higher than the September quarter 2008 estimate.
2. The next quarter's seasonally adjusted estimate of chicken meat production is 2.6% lower than the September quarter 2008 estimate.

WHAT-IF CHICKEN MEAT PRODUCTION

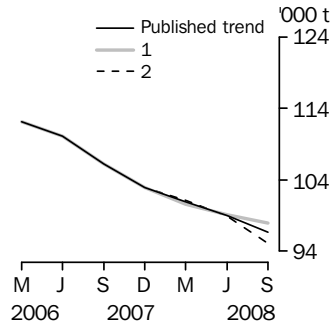


APPENDIX WHAT IF ... ? REVISIONS TO TREND ESTIMATES *continued*

Wool receivals

1. The next quarter's seasonally adjusted estimate of wool receivals is 5.4% higher than the September quarter 2008 estimate.
2. The next quarter's seasonally adjusted estimate of wool receivals is 5.4% lower than the September quarter 2008 estimate.

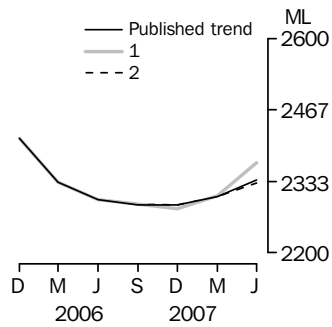
WHAT-IF WOOL RECEIVALS



Whole milk intake by factories

1. The next quarter's seasonally adjusted estimate of whole milk intake by factories is 2.8% higher than the June quarter 2008 estimate.
2. The next quarter's seasonally adjusted estimate of whole milk intake by factories is 2.8% lower than the June quarter 2008 estimate.

WHAT-IF WHOLE MILK INTAKE BY FACTORIES



FOR MORE INFORMATION . . .

INTERNET **www.abs.gov.au** the ABS website is the best place for data from our publications and information about the ABS.

INFORMATION AND REFERRAL SERVICE

Our consultants can help you access the full range of information published by the ABS that is available free of charge from our website. Information tailored to your needs can also be requested as a 'user pays' service. Specialists are on hand to help you with analytical or methodological advice.

PHONE 1300 135 070

EMAIL client.services@abs.gov.au

FAX 1300 135 211

POST Client Services, ABS, GPO Box 796, Sydney NSW 2001

FREE ACCESS TO STATISTICS

All statistics on the ABS website can be downloaded free of charge.

WEB ADDRESS www.abs.gov.au